

Designing Socially Sustainable Future Workplaces

(in the Age of Disruption and Uncertainty)

Cecilia Berlin | CHALMERS University of Technology | Gothenburg, Sweden

What will **you** do to the humans in manufacturing?



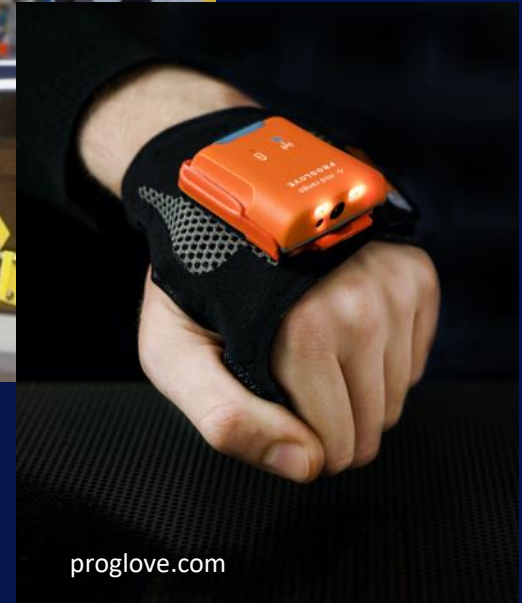
Good leadership = creating good conditions for people to perform

Background vectors created by rawpixel.com and kjpargeter - www.freepik.com

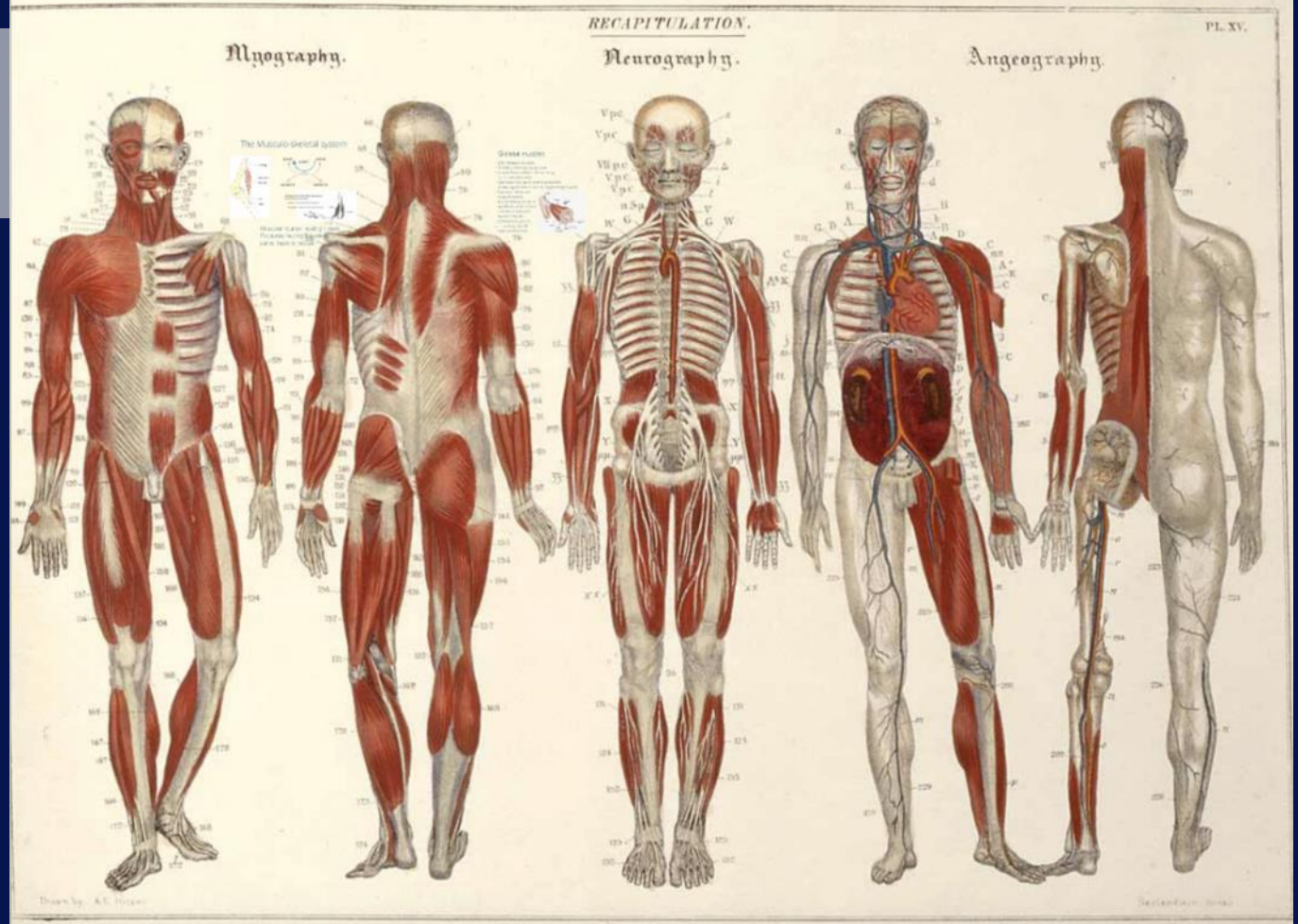
Technological innovations – how will they affect workers?



Source: Microsoft



What hasn't
changed...



What hasn't
changed...

Memory

Cognitive
resources get
spent!

Attention

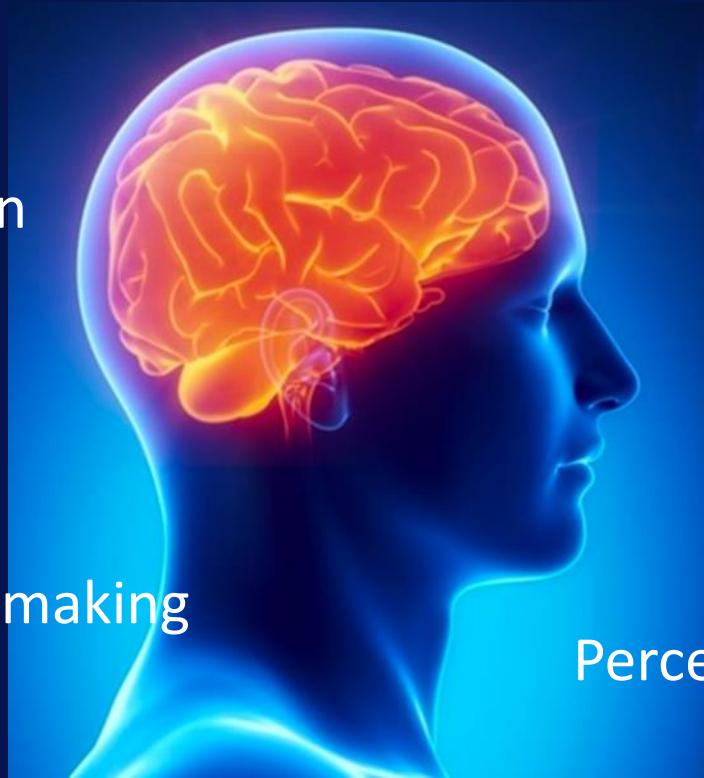
Experience

Decision-making

Stress

Senses as we age

Perception



A moving target:

*What future health risk exposures
will designers and engineers
need to learn to expect,
when new technology and work
demands meet
human bodies and minds?*

In all work environments...

How can we
prevent ill-
health...



... and increase
well-being alongside
system performance?



USING:

- Design
- Evaluation
- Training



Designing Socially Sustainable Future Workplaces

- *More knowledge about cognitive ability vs. mental workload – how to analyze and design work for healthy levels*
- *Effects of enabling technology, e.g. Using digital tools or wearing an exoskeleton on the body all day*
- *What will give us enough recovery, at work and in our lifestyle?*

Future vision of health in industrial work:

- No more hand injuries! (physical)
- No more engineers designing harmful workplaces or tasks! (macro)
- Better recognition of mental work over- (or under-) load! (cognitive)
- Knowing what it means to use advanced aids, like digitalized systems, exoskeletons etc. (cognitive / physical / macro)

What will **you** do to the humans in manufacturing?



Good leadership = creating good conditions for people to perform

Background vectors created by rawpixel.com and kjpargeter - www.freepik.com